



# THE JING ORB

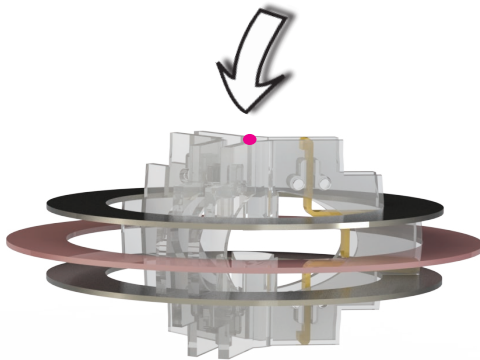
Augmented Therapy System for Rapid Recovery

David  Wolfe

## USER MANUAL

# New and Improved

This ORB contains our new and greatly improved centerpiece which provides a 50% increase in the field produced. Unlike the original centerpiece which can be used with either side up, with this new centerpiece there is a pink dot on the center of it that should be placed towards the bottom of the ORB.



David 🥑 Wolfe

# What do I get with my JING ORB?



Power Unit



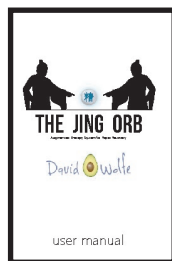
Cable & "Mohawk" connector



2 Ring and Track replacement sets



Spare Fuses



Manual

# General Advice

Use only once every 48 hours (Every other day)

Keep the Power Unit away from water.

Inspect the Power Unit and its components for damage prior to use.

Use fresh water for each session.

Try not to contact the water of another person after they have had a session.

Refrain from physical contact with a person having the session.

One person per session per bath.

Remove all jewellery from any body part submerged in the water.

Keep electrical and electronic devices away from the water.

Do NOT use any unauthorized additives in the water.

Replace fuses with same rating as indicated.

Use only authentic replacement components.

Dispose of waste water after session is complete.

Clean module and container with authorized cleaners only.

Never use the system for anything but its intended use.

## Additives to increase Conductivity

Not required for normal operation (to be used only if advised)

1. Potassium Citrate (Food Grade) Preferred
2. Rock Salt
3. Sea Salt

Please note:

Using conductive additive should only be required if there is insufficient conductivity in the water to operate the system.

If additive is required, only use minimal amount incrementally until the system functions within its recommended range.

**WARNING: Excessive use of conductive additives will damage the system and is not covered by warranties.**

# Setup

1. Unpack the system
2. Inspect all components for damage or wear
3. Connect the cable to the module via instructions
4. Connect the cable to the Power Unit
5. Plug the Power Unit into the mains power
6. Place the module into the water making certain there is enough water to cover the module completely
7. Turn the Power Unit on and wait for the system to be ready
8. Push the start button
9. Enjoy your session

## Recommendations

Keep the module clean and well maintained for optimal performance.

Use only authorised cleaning solutions; "CLR", "Glitz", "Safe-AR-d-lyme-it", "Descal Magic" or even a solution made of pure lemon juice and salt.

Do NOT use corrosive cleaners.

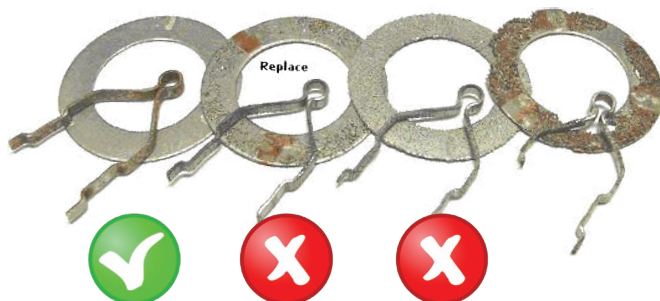
Soak Module for 5-15 minutes after each use. Prolonged soaking may cause excessive wear and reduce the life of the Module. Rinse thoroughly.

Never polish any of the parts with any product.

Never subject the module or Cable Connector to water temperatures higher than 42°C.

Do NOT clean the Module or any part in a Dishwasher/Autoclave or in boiling water.

Replace consumables when visibly pitted and worn or when the edges or thickness has been visibly affected.



# Cleaning

Cleaning should be done after every session even if it is only for a minute or so in the cleaning solution before you rinse it off with fresh water.

There is no need to disassemble the module to clean it. Simply place the whole module into the cleaning solution for anywhere from one minute to one hour (for very dirty modules) and then rinse.

There is also no need to remove the attached "mohawk" connector cable when cleaning but be sure to keep the power unit connector end of the cable out of the water and solution.



1 tablespoon



1 litre



or you can use

$\frac{1}{2}$

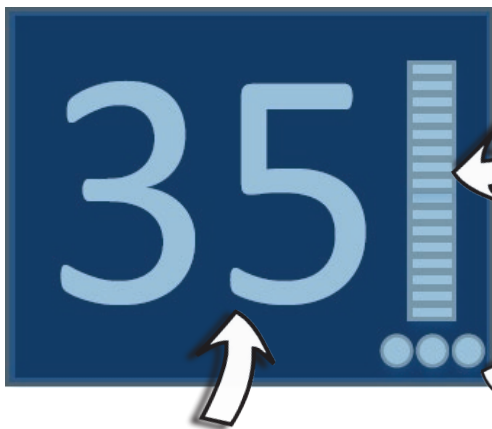


$\frac{1}{2}$



(this mix can be kept in a sealed container and reused)

# Display



The number "35" is the number of minutes for a session and will count down. Once it hits "0" the session will complete and the system will show "SESSION COMPLETE".

The bars designate the amount of current drawn by the module in the water to produce the necessary effect. About here is perfectly fine.

Since this system is automated, no salt or conductive material needs be mixed with the water. The unit will automatically test the water itself and adjust to a LOW, MEDIUM or HIGH setting to deliver the correct amount of charge for the session.

If the system detects that there isn't enough conductivity, the "PLEASE PLACE MODULE IN THE WATER" message will appear. Refer to the next section for instructions.

## Low Conductivity or No Connection

**PLEASE PLACE MODULE  
IN THE WATER**

If you see this screen, then please refer to this manual's troubleshooting guide or visit the website for more detailed explanations of technical problems and issues that might occur.

This screen indicates either a lack of connection from the power unit to the module or low conductivity in the water causing the unit to not draw enough current to work correctly. Add a pinch of salt or potassium citrate to the water to increase the conductivity. If this does not work, contact support.

# Taking the ORB (module) apart

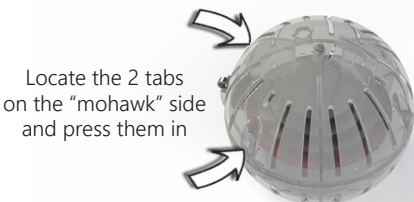
for video instructions go to  
Youtube and search JING ORB ASSEMBLY



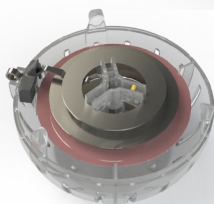
Slide the clip down  
to unlock the "mohawk" connector



Give it a wriggle  
and pull up gently



Locate the 2 tabs  
on the "mohawk" side  
and press them in

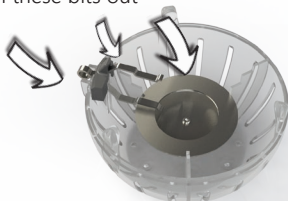


It should open  
up like  
a clam shell



Slide the centre piece  
out after removing the  
top worn ring

Pull these bits out



and you should be left with this



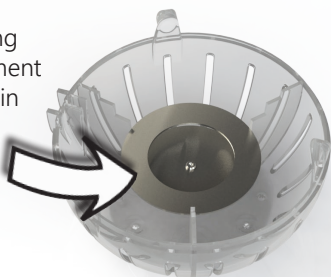
# Changing the Consumables

for video instructions go to  
Youtube and search JING ORB ASSEMBLY

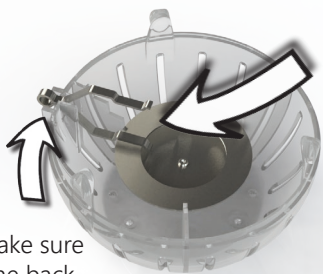


Start with this bit.  
It should look like this.

Take the first ring  
from the replacement  
pack and put it in  
just like that.



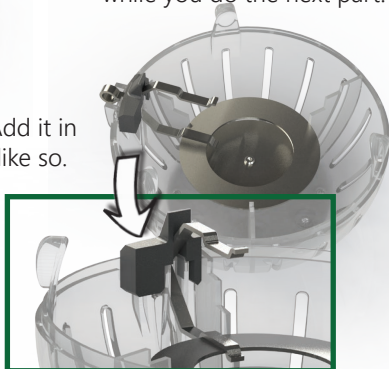
Then take the  
"positive track"  
and sit it on  
the ring like this.  
Make sure it's  
touching.



Make sure  
the back  
of the track  
is in the slot.

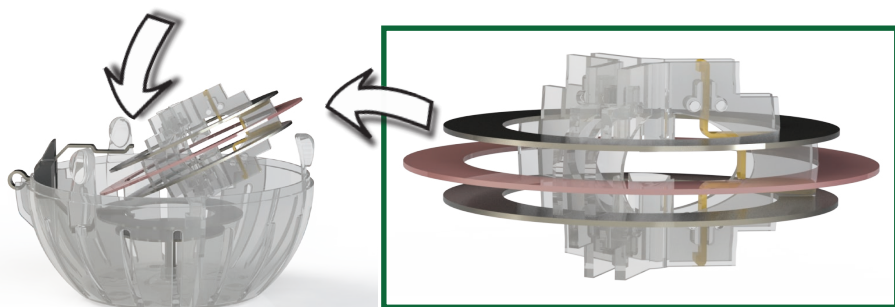
The "track steady" is an optional  
part that holds the track  
while you do the next part.

Add it in  
like so.

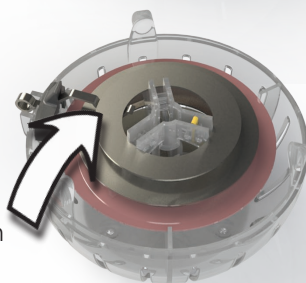
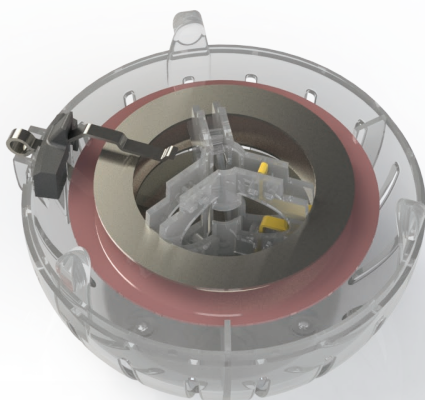


The track steady can stay in.

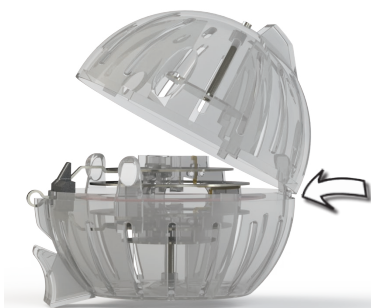
Now take the centre module and slip it in under the track and then give it a wriggle until it sits in neat and snug.



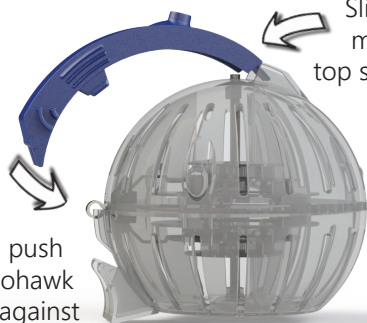
It should now be looking like this.



Now we take the other ring and sit it on top just like this.  
Make sure it  
lays on the track.

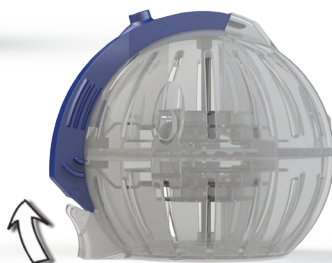


Take the top and clip it on starting with this tab and close it like a clam shell



Slip the top of the mohawk into the top slot on the module.

Then push the mohawk down against the module.

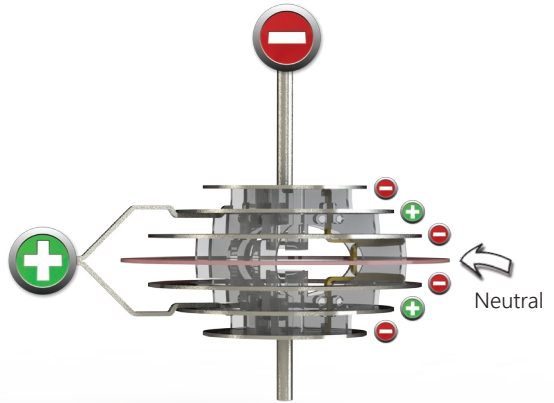


Slide the clip up to lock the "mohawk" into place and you are ready to go.

# Electrical Configuration

The positive is connected by the track and the negative is connected through the top.

If you connect it wrong it will blow a safety fuse and not work until you replace the fuse.



David  Wolfe

# Troubleshooting Guide

No lights or display on power unit	No power source	Ensure that the unit is plugged in at the wall and switched on. Ensure that the power supply's on/off switch is on.
	Rear Fuses are blown	Replace both of the fuses at the back of the unit with 2 Amp fuses (amperage is etched on the metal of the fuse).
	Internal power failure	Please contact your nearest service centre for assistance.
The module does not produce any visible activity	Module is not in the water	Place module fully submerged into water
	Module is not correctly plugged in	Plug module in according to instructions in this manual
	Consumable parts are depleted, missing or faulty	Replace consumable parts
Excessive warning	Water too conductive	Replace water or dilute with distilled, demineralised or rain water
Front fuse blowing	Module positive and negative connectors touching	Check module for crossed connections
	Faulty cable	Replace cable
	Faulty power unit	Please contact your nearest service centre for assistance.
Module dirty and clogged	Cleaning of module not completed correctly	Follow cleaning instructions. Leave module in cleaning solution for 8 - 12 hours. Rinse thoroughly.
Display shows red screen	Front fuse is blown	Replace front fuse
	Too much conductivity	Add demineralised water
	Too little conductivity	Add conductive solution

# Power Supply Specifications



CLASS II Equipment, Type B Applied Part  
Safety extra low voltage isolating DC Power Supply.  
Operation; On: 35 minute intervals, Off: 10 minute intervals.

Recommended Temperatures:  
Operating: -10°C to 40°C (14°F to 104°F)  
Storage: -10°C to 60°C (14°F to 140°F)

Splash Proof Case: As per IP65

Safety: System has been designed and built to meet:  
The International Electrical Safety & Electromagnetic Compatibility Standards  
EN60335.1, EN55014.1:2000+A1:2001 &  
EN55014.2:1997+A1:2001  
To comply with requirements for CE marking.

Unit has been further designed and built to meet:  
The International Electrical Safety & Electromagnetic Compatibility Standards  
IEC60601.1.0:1998+A1:1991+A2:1995 with variations for Australia, AS3200.1.0:1998  
Canada, CSA-C22.2 No. 601.1-M90:2001  
USA, UL2601.1:1997 and variations for Europe.

Input: 100 to 120Vac 50/60Hz  
200 to 240Vac 50/60Hz  
As indicated on the power supply.

Output: Isolated, Rectified and Filtered, 24Vdc, 5Amps

Protection: Fuses, Quick Blow, 20x5mm  
Input: 2x2Amps, 250Vac (F2AL250V)  
Output: 5Amps, 250Vac (F5AL250V)

For countries using 100-120Vac.  
Fuses of 125Vac rating can be used.


Dimensions: 190x135x103mm

Weight: 2.8Kg (6.2 lbs)

Storage: In a dry environment away from direct sunlight,  
heaters, dust, mechanical vibration or shock.

Cleaning: Use a soft moist cloth only.  
Do not use aerosol or abrasive type cleaners.

Exclusively distributed by

David  Wolfe



Like us on Facebook

**bioelectro****dynamics**  
corporation

For Sales, Service, and Technical Support Or Parts:

**480-463-4828    [www.TheJingOrb.com](http://www.TheJingOrb.com)**

Please note that the JING ORB or any variant offered by us is not offered, nor intended to diagnose, cure, mitigate, prevent or treat any disease or health condition and is not a medical device. Use only as directed and consult your primary health care provider if you have any medical concerns and/or if symptoms persists.

Water color from any session, with any device of this technology, may vary due to a large number of different parameters and circumstances, some of which are outlined are outlined herein. No Interpretation should ever be applied to any one color and/or precipitation, No matter the configuration or system used. Nor should it be indicative of the effectiveness of the JING ORB session.

This product has not been evaluated by the FDA.